

KNOW YOUR CAMPUS

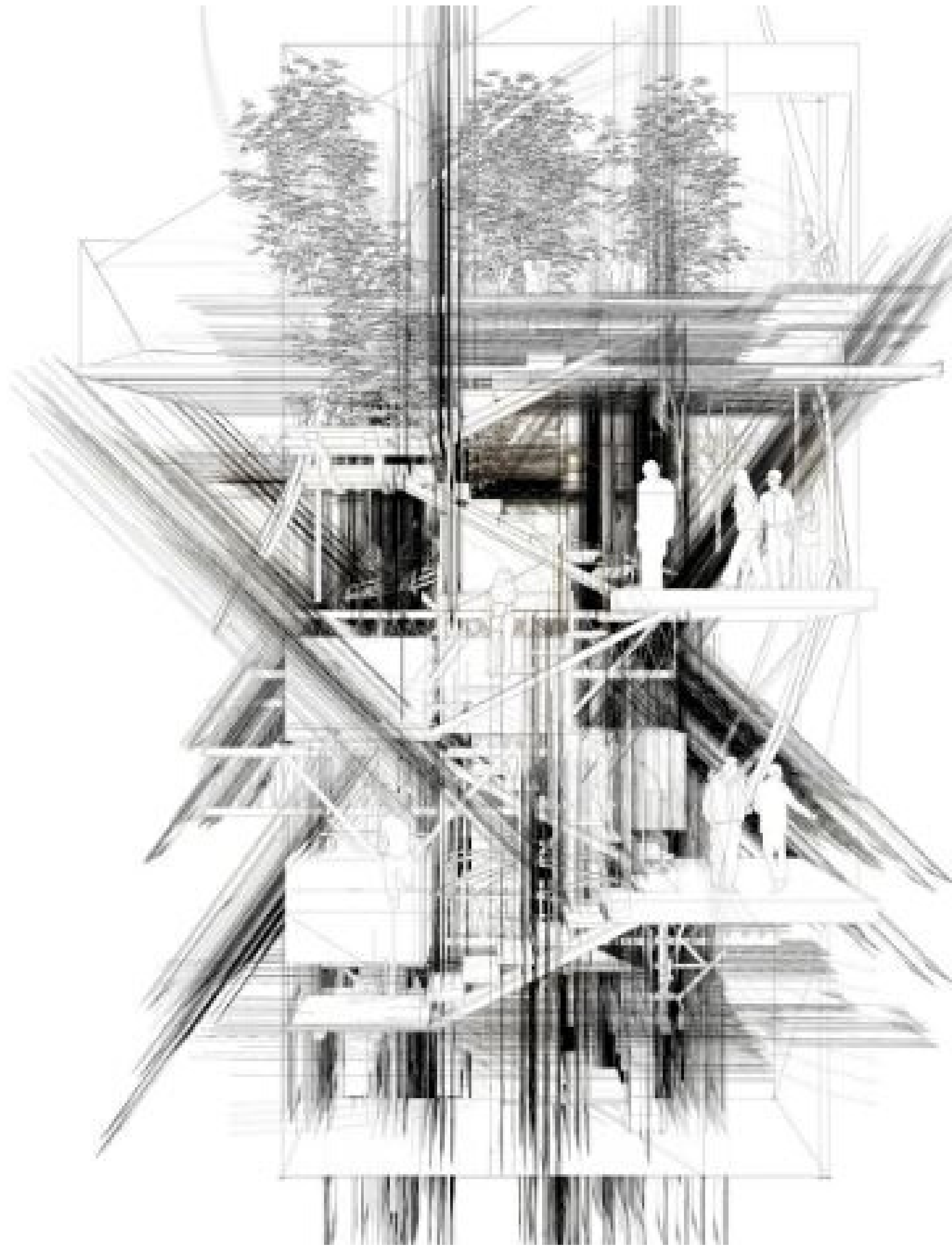
18 APRIL 2020

8

ISSUE

WORLD HERITAGE DAY EDITION

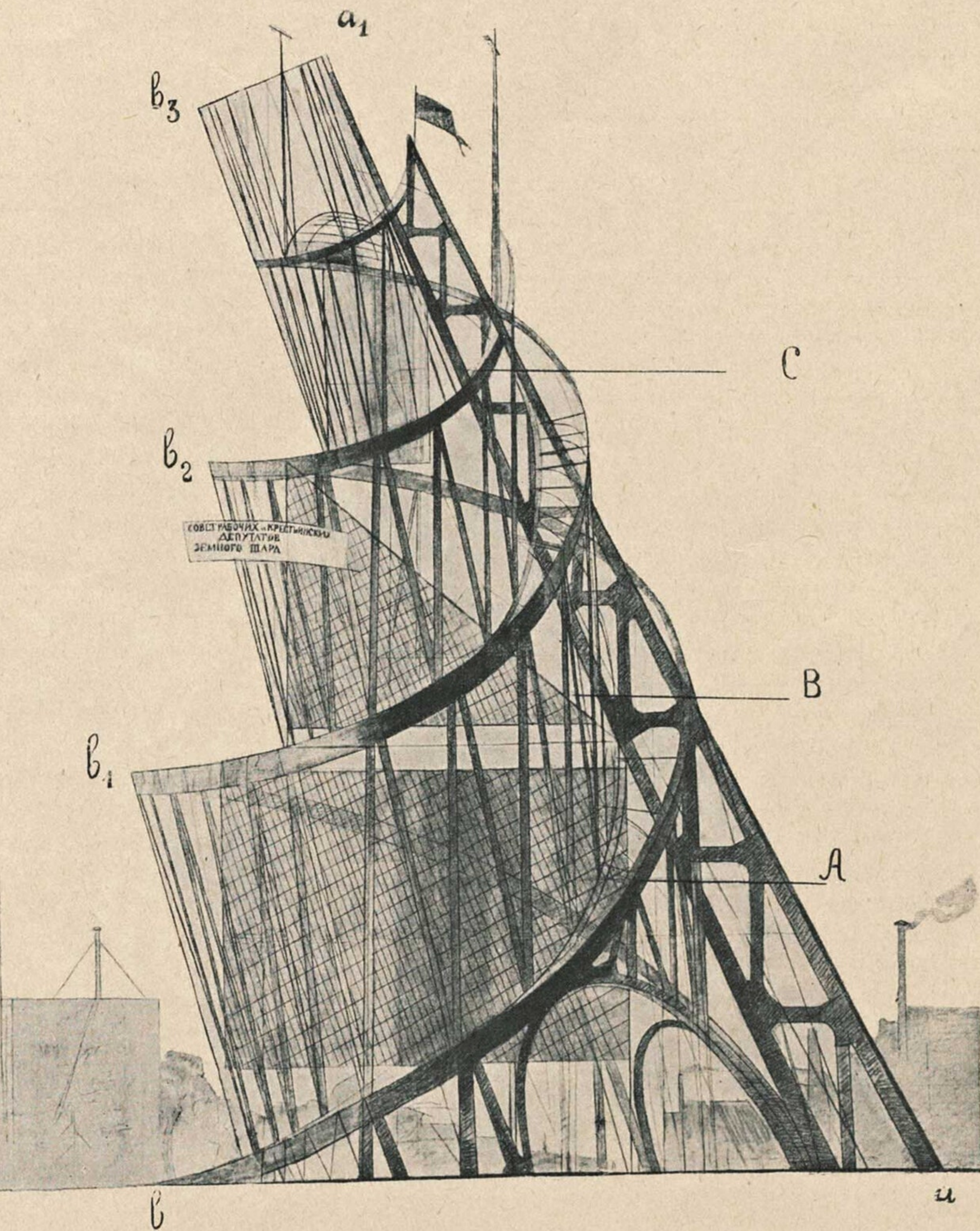
Shared Cultures
Shared Heritage
Shared Responsibility



About the initiative

The New Forest -the IFS training campus - an area which houses the FRI and its sister institutions including the IGNFA is also home to a rich biodiversity. These flora and fauna become a part of our neighbourhood while we are at the campus. The campus is also adorned with heritage buildings, museums, nurseries and a beautiful landscape. This initiative is aimed at making us more familiar with our neighbourhood.

The KYC (Know your Campus) initiative started by the IFS 2019 batch in this lockdown period shall come out with a campus related topic each day.



ARCHITECTURE OF FOREST RESEARCH INSTITUTE

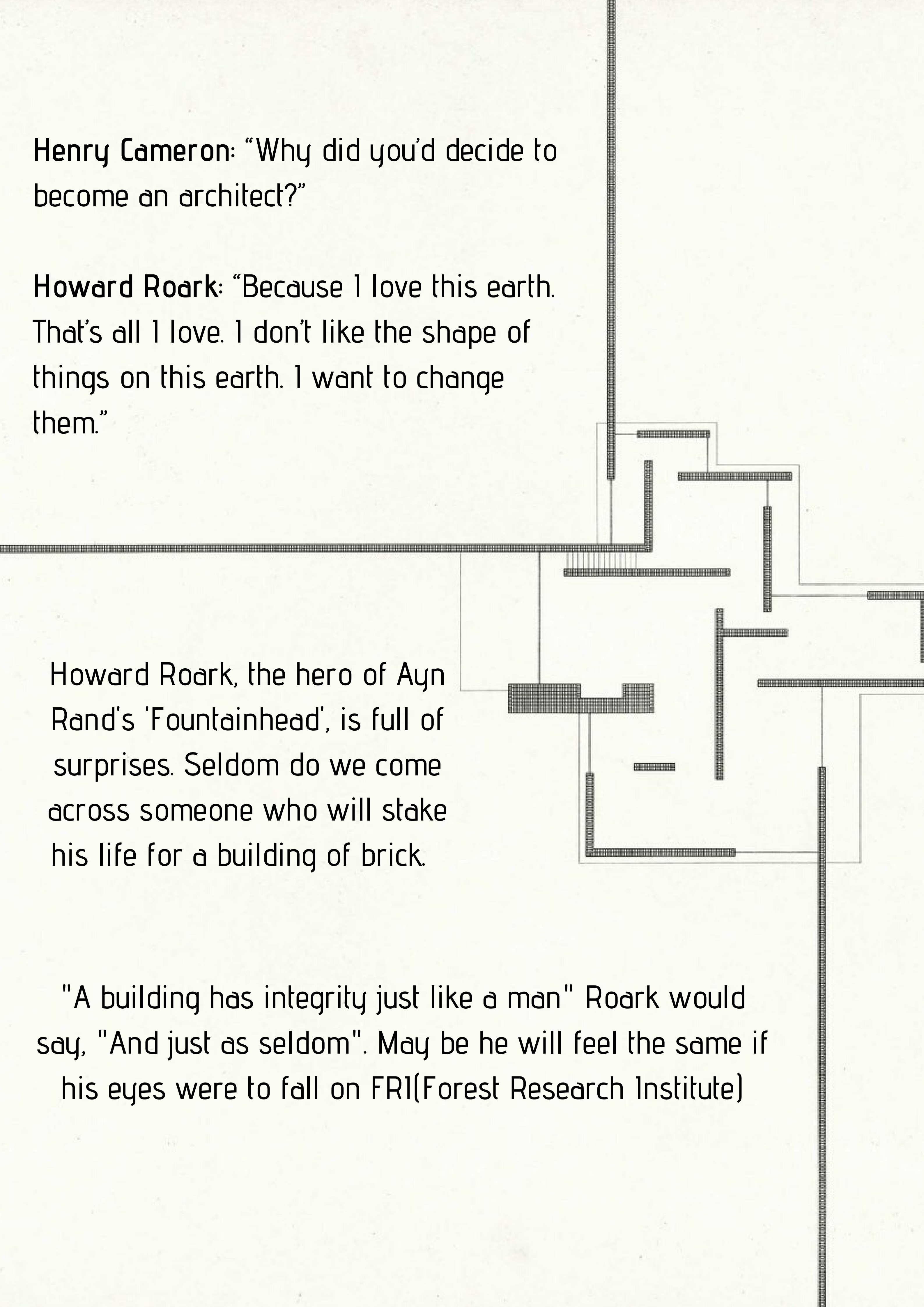
A NATIONAL HERITAGE SITE

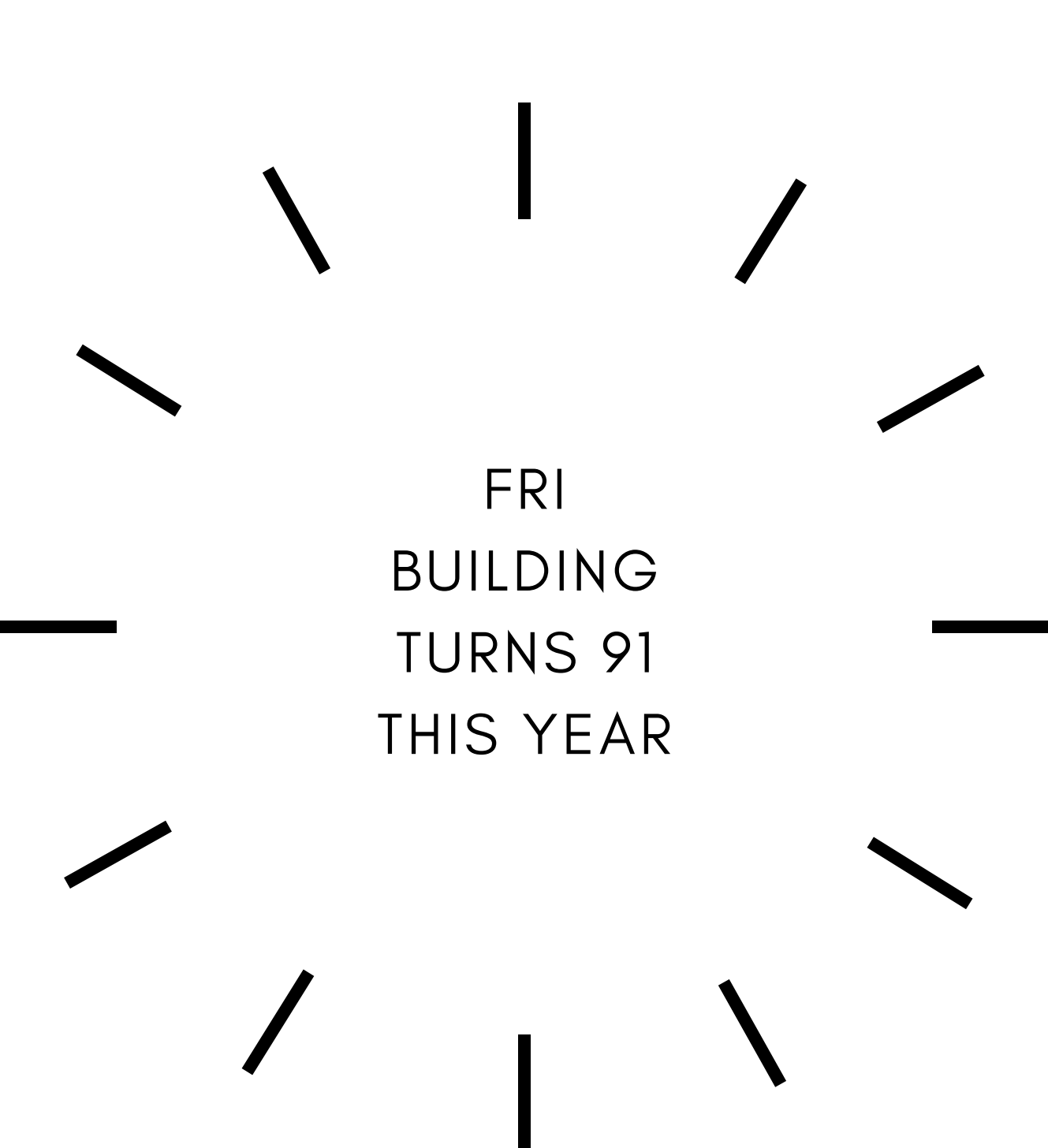
Henry Cameron: "Why did you'd decide to become an architect?"

Howard Roark: "Because I love this earth. That's all I love. I don't like the shape of things on this earth. I want to change them."

Howard Roark, the hero of Ayn Rand's 'Fountainhead', is full of surprises. Seldom do we come across someone who will stake his life for a building of brick.

"A building has integrity just like a man" Roark would say, "And just as seldom". May be he will feel the same if his eyes were to fall on FR1(Forest Research Institute)





1929
for
Two cool things

Don Bradman hits his first
century
&
FRI building
is
inaugurated

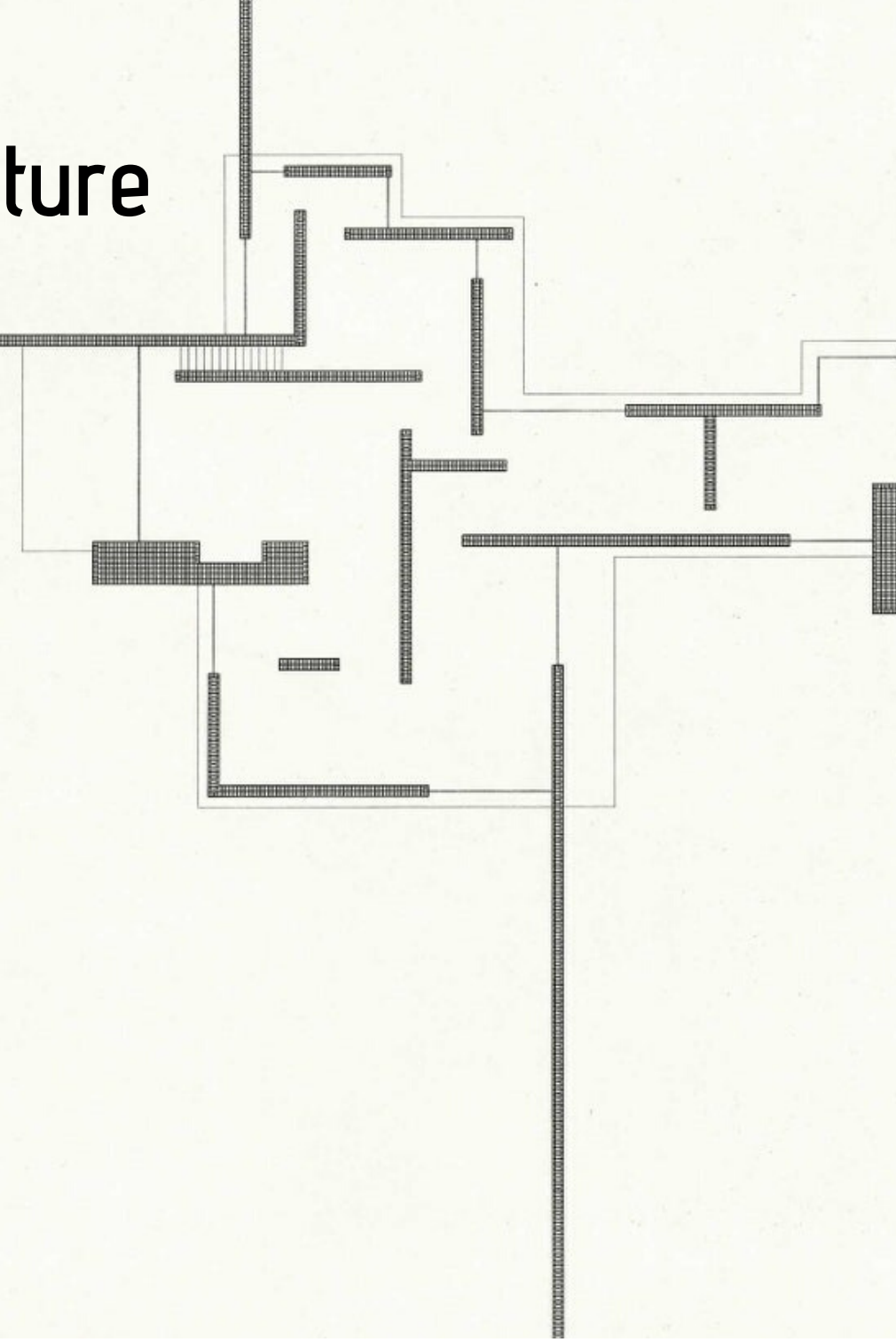
Style

Graeco Roman Colonial architecture



Styled by
Sir CG Blomfield

A forgotten figure
eclipsed by Edwin Lutyens,
who tended to
monopolise attention.



Graeco elements

Wall less portico with pillars



FR1



Parthenon of Ancient Greece

Style Graeco Roman Colonial architecture

Roman elements

Peristylum

The peristylum was an open courtyard within houses
A signature of Roman architecture



FRI



Sant'Ivo alla Sapienza
Rome

Pediments and Tympanum



La Madeleine Church
Paris

A pediment is a triangular element and the space enclosed by the pediment is tympanum. In Roman temples the tympanum was filled with sculptures of highest taste

Style

Graeco Roman Colonial architecture



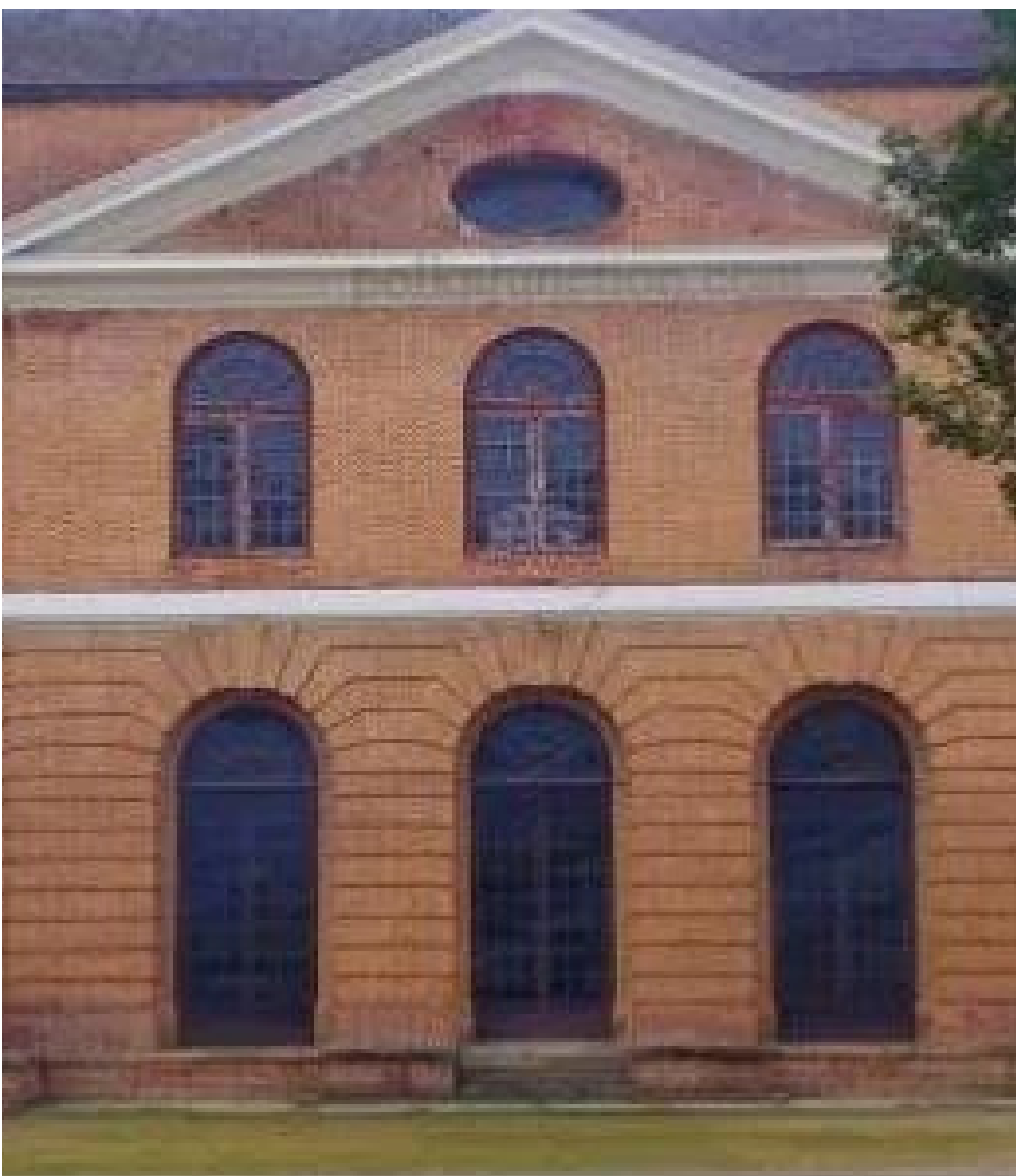
But in FR1 the tympanum is plain and devoid of any pattern.

May be a person with a curious eye can seek for the reason

FR1

Colonial elements

Huge windows on ground floor and small windows on first floor



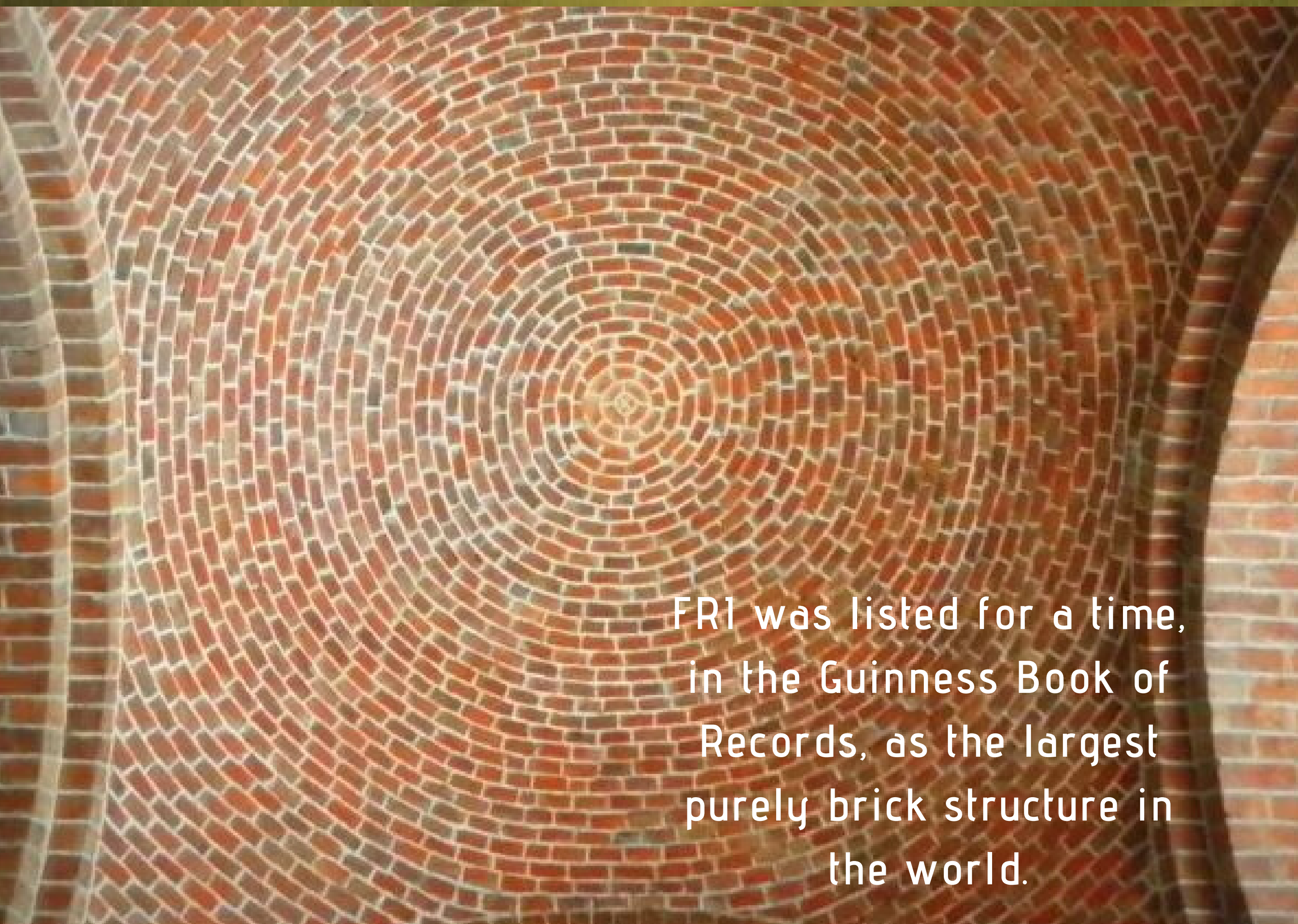
FR1



Victoria Memorial
Kolkatta



Wheat and other food crops
were grown in the front of
main FRI building during the
second world war



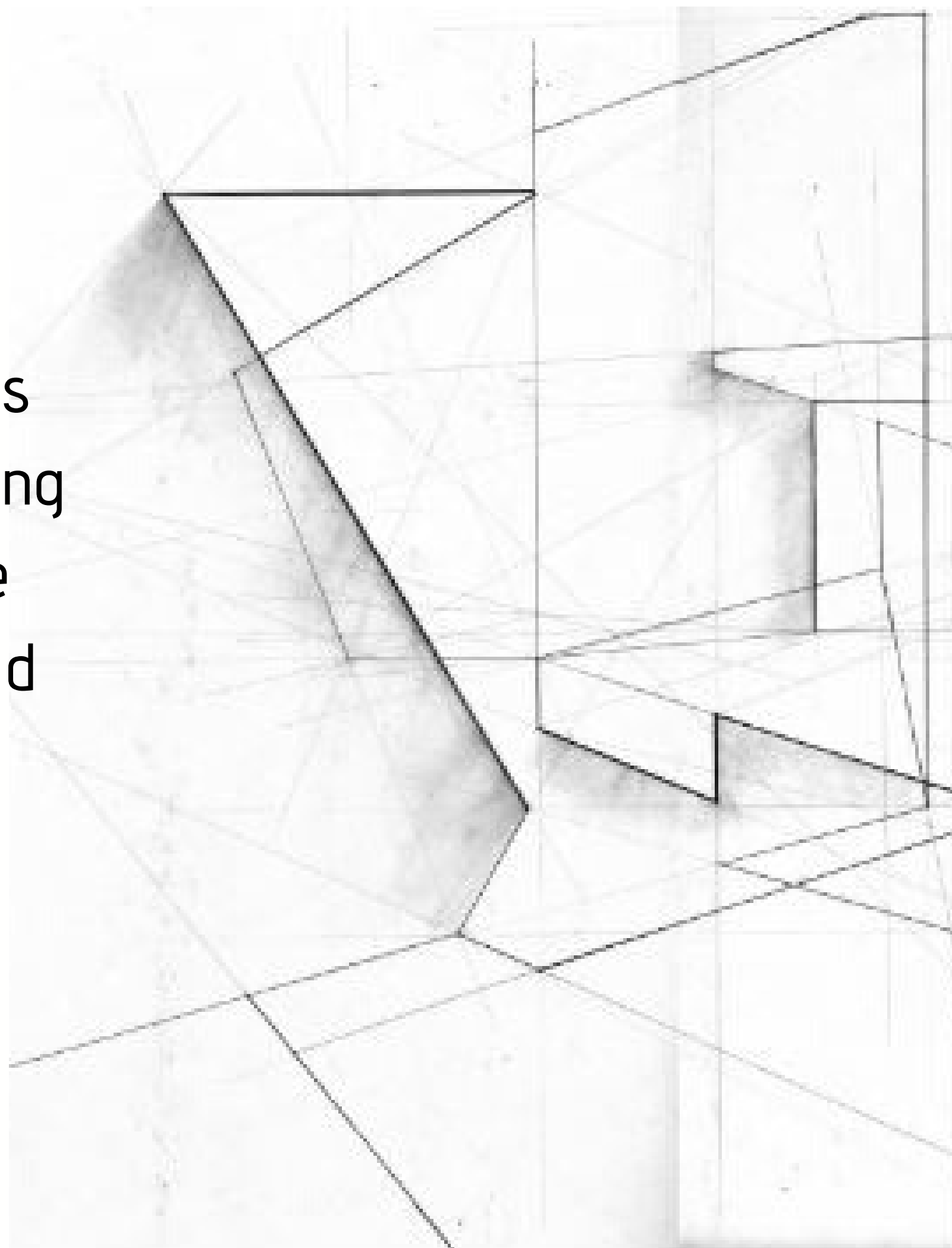
FRI was listed for a time,
in the Guinness Book of
Records, as the largest
purely brick structure in
the world.



Modern architecture is always anxious to control human beings and their actions. Glass facade buildings and high rise apartments that dot the cities today confine human beings to spaces of anonymity and productivity.

Even architectural photography is so anxious of humans that all it tries to capture is
Empty buildings and lonely corridors.

But the structure of FRI understands that architecture is not about control. It is an evolving relationship of space with the coming together of humans and their actions.

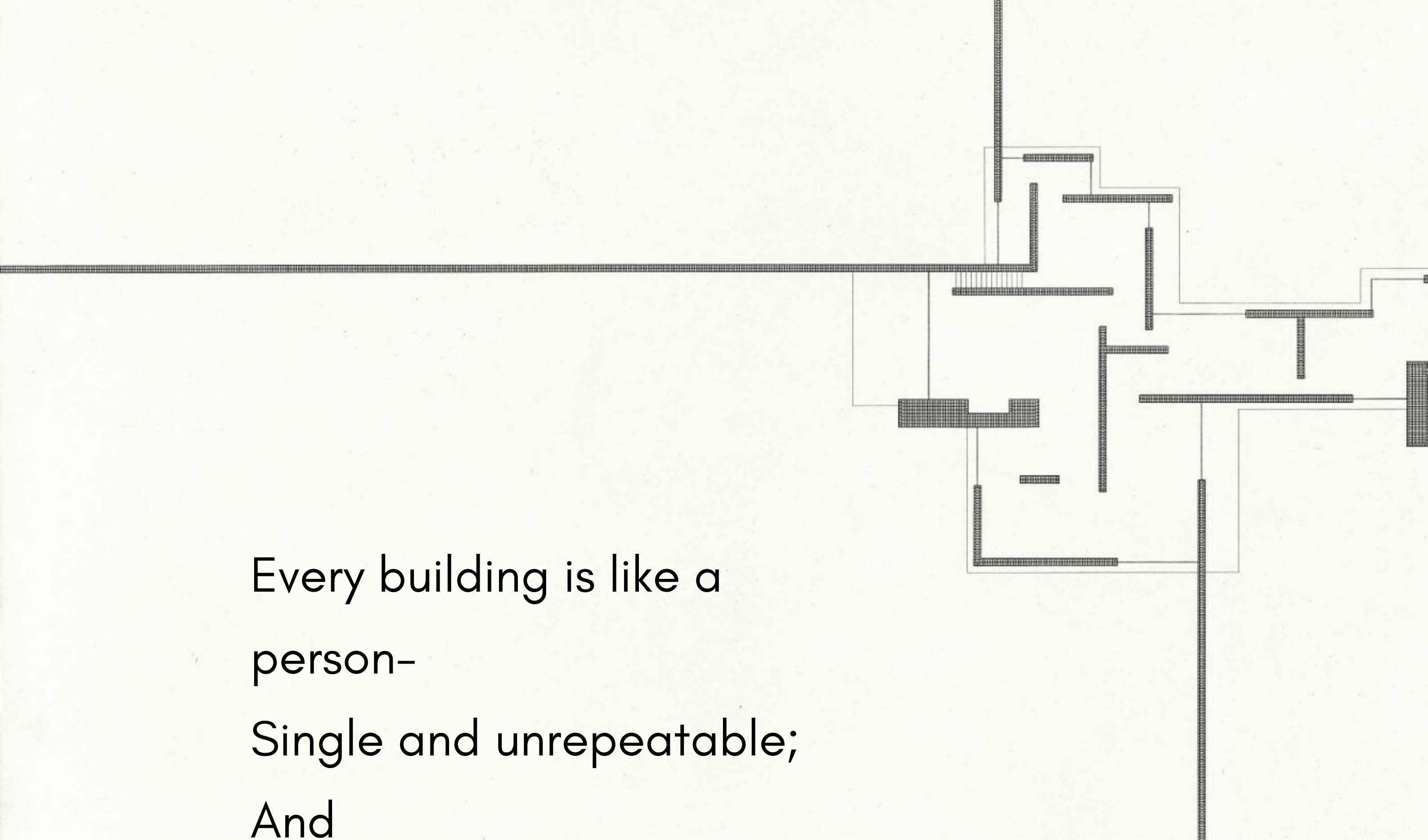


FRI is a space for a child to run on her
corridors, a reader to nap on her walls, and
loved ones to cherish a fleeting moment

The next time you find yourself in FRI,
sing a song aloud,
photo bomb in an empty corridor
or
float a kiss for its walls.

Breathe life into it-
For it makes the architecture of FRI
Alive.





Every building is like a
person—
Single and unrepeatable;
And

Our world becomes
A bit beautiful,
Every time,
We negotiate with a
building
That way.

TEXT JEYKUMARAN N
AND
DESIGN IFS 2019

TALK TO US

kastusule@gmail.com