



NATURE AND WILDLIFE PHOTOGRAPHY CLUB IGNFA

KYC

KNOW YOUR CAMPUS
ISSUE 2 12-04-2020

ABOUT THE INITIATIVE

THE NEW FOREST - THE IFS TRAINING CAMPUS - AN AREA WHICH HOUSES THE FRI AND ITS SISTER ORGANISATIONS INCLUDING THE INDIRA GANDHI NATIONAL FOREST ACADEMY (IGNFA) IS ALSO HOME TO A RICH BIODIVERSITY. THESE FLORA AND FAUNA BECOME A PART OF OUR NEIGHBOURHOOD WHILE WE ARE AT THE CAMPUS. THE CAMPUS IS ALSO ADORNED WITH HERITAGE BUILDINGS, MUSEUMS, NURSERIES AND A BEAUTIFUL LANDSCAPE.

THIS INITIATIVE IS AIMED AT MAKING US MORE FAMILIAR WITH OUR NEIGHBOURHOOD.

THE KYC (KNOW YOUR CAMPUS) INITIATIVE STARTED BY THE IFS 2019 BATCH IN THIS LOCKDOWN PERIOD SHALL COME OUT WITH A CAMPUS RELATED TOPIC EACH DAY.

RHESUS MACAQUE

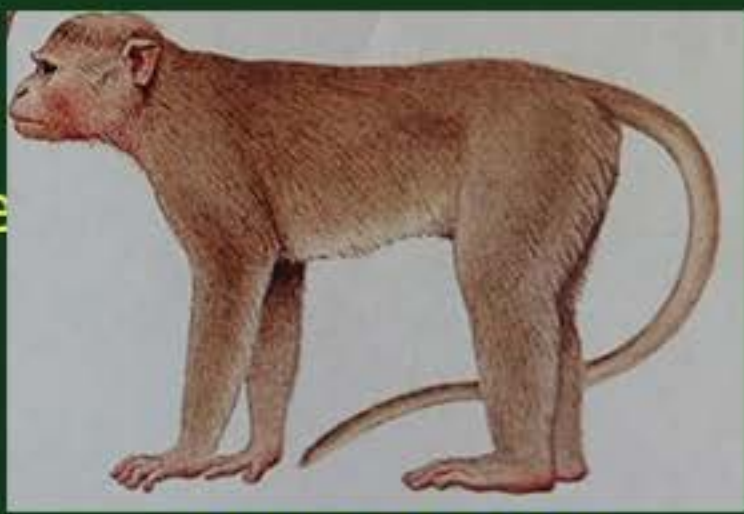


The Rhesus macaque and its cousins like the bonnet macaque are commonly called as Monkey or Bandar in India. However a peculiar difference between the Bonnet macaque and the Rhesus macaque is the latter's short tail and orange-red fur on its rump.



RHESUS MACAQUE

The permanent residents of Old Hostels are the rhesus macaques and their generations see batches of IFS OTs come and go.



BONNET MACAQUE

They are social animals and live in large troops. The Rhesus macaque is the most common monkey of North India. The troops have evolved to live very close to human habitations and rarely penetrating into deep jungles. They survive by raiding gardens, fields and even human habitations where food is available. They mainly consume fruits, insects, roots and small shoots. Troops are commonly seen even in crowded urban areas, forts and temples. While in the Old Hostel, we too have been the victims of such raids.

Excellent climbers and acrobats, the macaques swiftly jump over buildings, tree tops and balance over power lines.

Specie : *Macaca mulatta*
Family : Cercopithecidae



Rhesus macaques have large multi male/ multi female groups. Both males and females have their respective hierarchies. Thus there are both alpha male and alpha female. Alpha male is strongest and thus the ultimate leader. But his position is precarious and prone to competition from other males.

Did you know?

An interesting behaviour observed is that they pluck ticks and lice from each others bodies. Though it is aimed at keeping themselves clean, it also is important from socialisation point of view. It keeps their interpersonal bonding strong. This behaviour is called "allogrooming"

The rhesus macaque have lost the peoples fascination due to their ready presence in urban spaces. But certainly they are a lot of intelligent species and their interesting behaviour worth our observation



Photographs : Abhimanyu, IFS 2019

Text and Design :
Agrim Saini, IFS 2019

Kasturi Sule, IFS 2019

We welcome you feedback :
kastusule@gmail.com